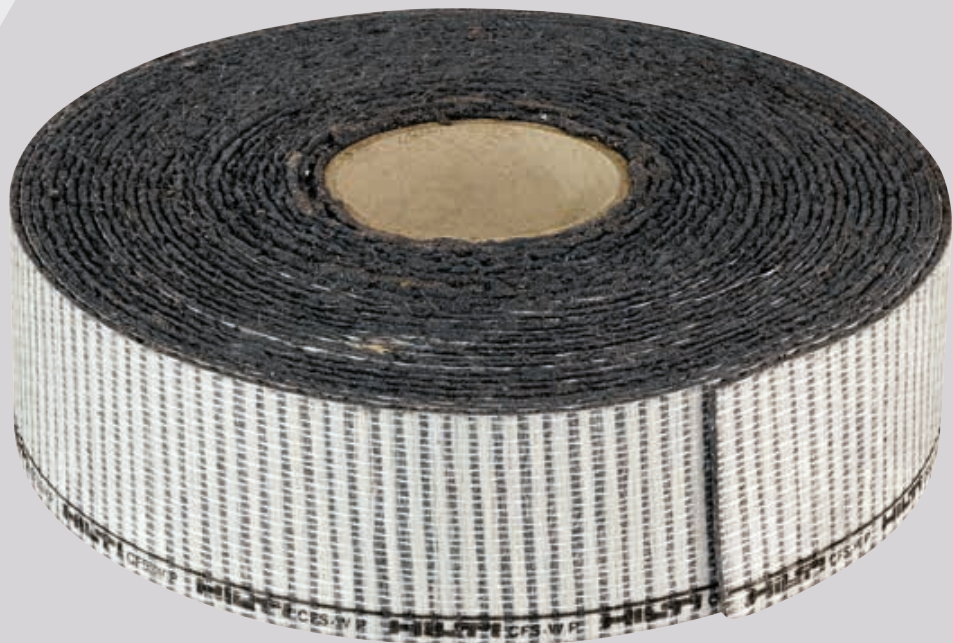




FIRESTOP POWER WRAP CFS-W P

Technical Manual

European Technical Assessment
ETA-20/0989



CFS-W P FIRESTOP POWER WRAP

The all-rounder for combustible pipes and insulation in coated board



Applications

- Passive fire protection of waste water, roof drainage, potable water and refrigeration pipes in board applications
- Firestopping waste water and roof drainage pipes in drywall, aerated concrete, masonry and concrete
- Heating, cooling and fresh water pipes in shaft wall

Advantages

- Approved for a comprehensive range of combustible pipe and insulation materials in coated board applications
- Endless solution: one firestop product for all common combustible pipes and types of pipe insulation
- Cost-effective installation: one-person installation with no need for hooks, anchors or drilling
- Code-compliant: all pipes tested with end configurations meeting code requirements for the application

Technical Data

Dimensions (L x W x H)	10000 x 50 x 2 mm
Storage and transportation temperature range	-5 to 50 °C
Complementary products	CFS-S ACR

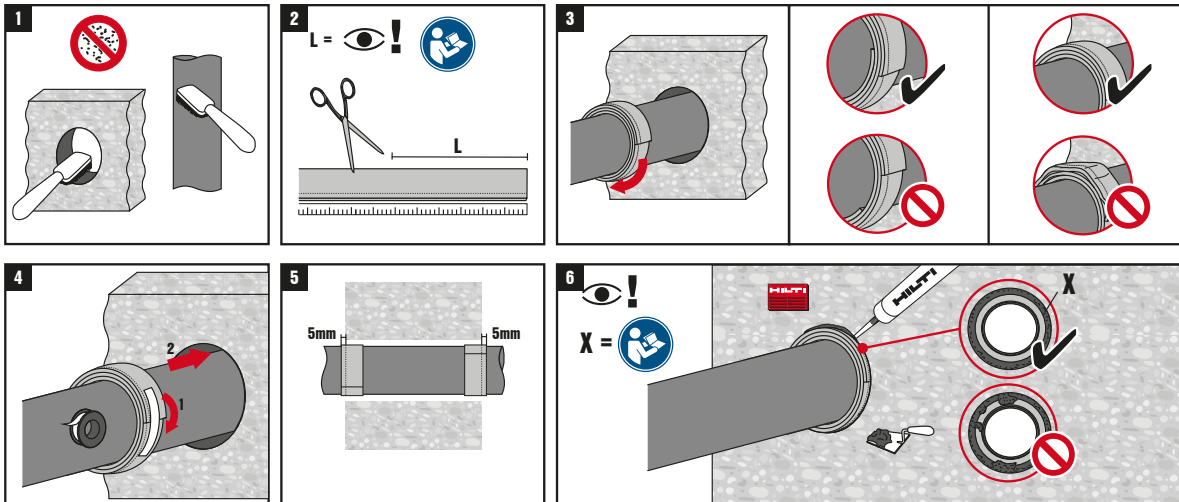


Order designation	Package contents	Length	Sales pack quantity	Item number
CFS-W P Firestop power wrap	1 x CFS-W P Firestop power wrap	10m	1 pc	2133384
CFS-W P Hook	20 x CFS-W P Hook		20 pc	2133385

INSTRUCTIONS FOR USE

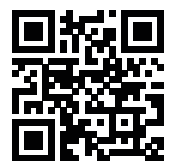
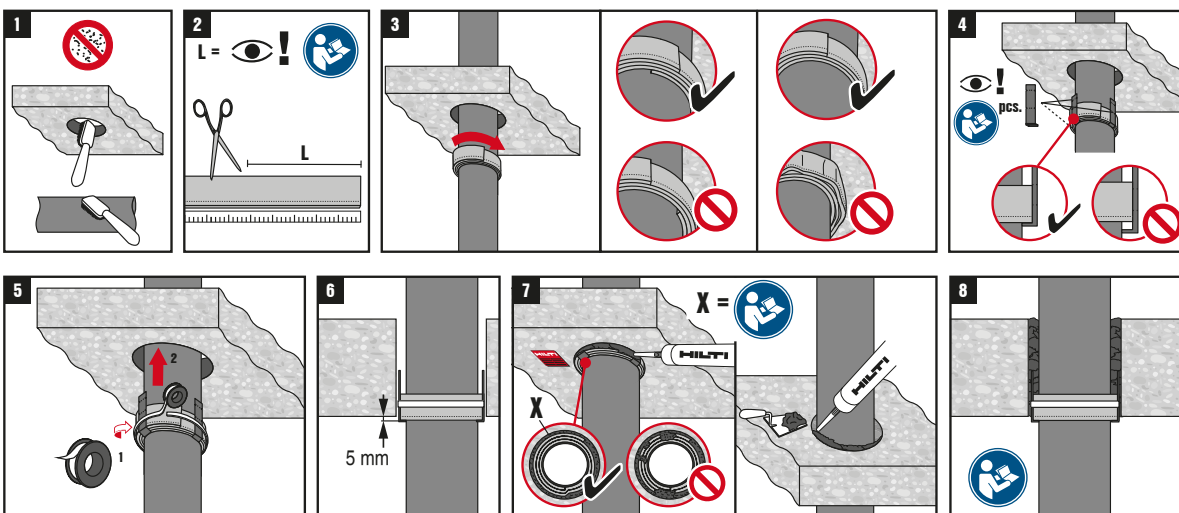
RIGID/FLEXIBLE WALL APPLICATION

ETA-20/0989



RIGID FLOOR APPLICATION

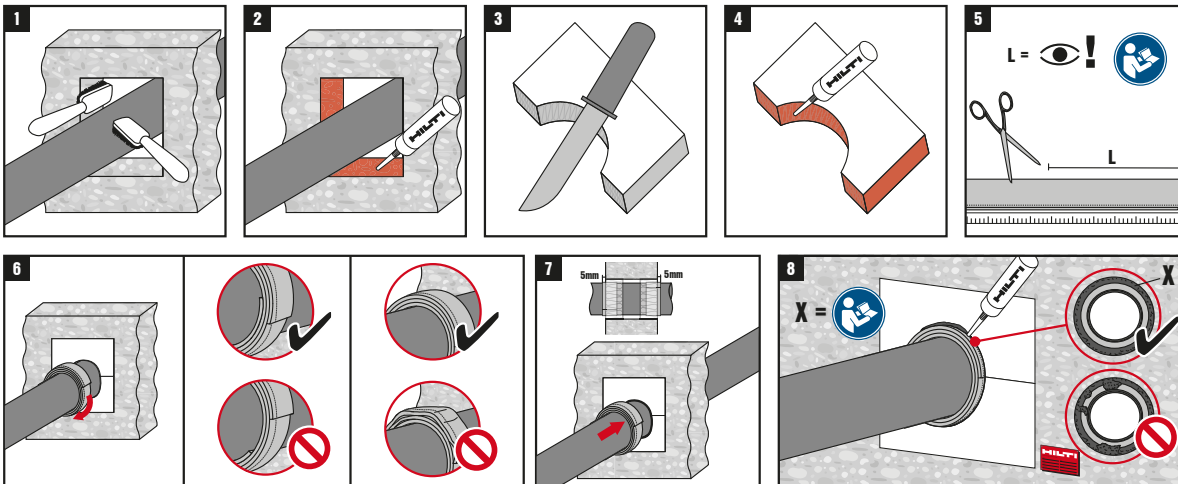
ETA-20/0989



WALL APPLICATION IN COATED BOARD

ETA 11/0429

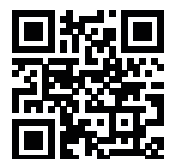
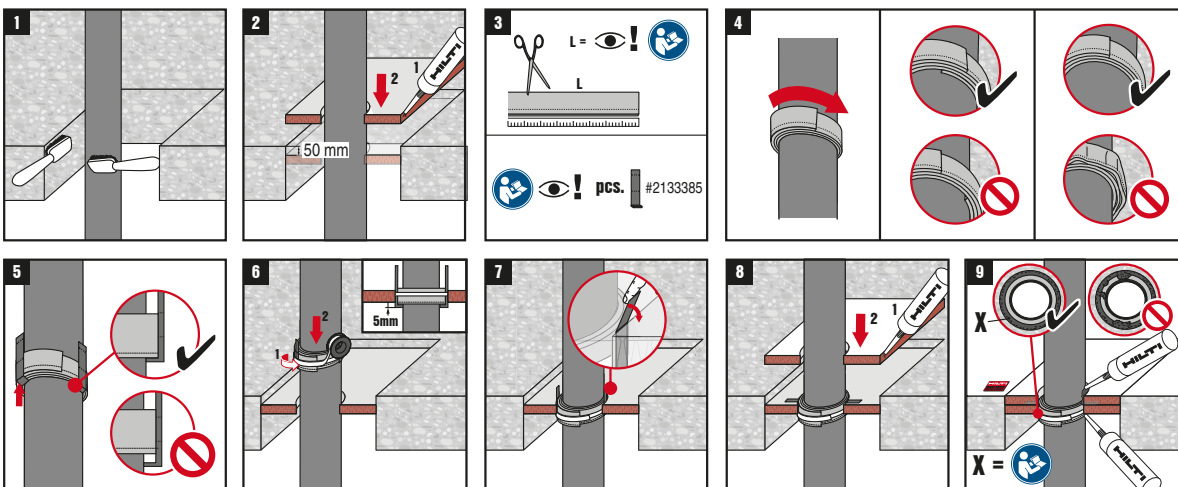
<p>QR</p> <p>www.hilti.group EN: http://fsselector.hilti.com</p>	
---	--

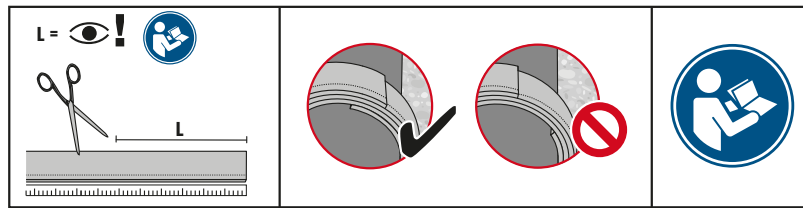






FLOOR APPLICATION IN COATED BOARD

ETA 11/0429






<p>QR</p> <p>www.hilti.group EN: http://fsselector.hilti.com</p>	
---	--











Layers				
	Ø (mm)	L (mm)	4 mm L (mm)	9 mm L (mm)
2	32	≥ 250	≥ 300	≥ 360
	40	≥ 300	≥ 360	≥ 410
	50	≥ 370	≥ 420	≥ 470
	56	≥ 410	≥ 460	≥ 520
3	63	≥ 690	≥ 770	≥ 820
	75	≥ 810	≥ 880	≥ 950
4	82	≥ 1200	≥ 1300	≥ 1400
	90	≥ 1300	≥ 1400	≥ 1500
	110	≥ 1530	≥ 1650	≥ 1750
	125	≥ 1730	≥ 1830	≥ 1960
6	135	≥ 2850	≥ 3000	≥ 3150
	140	≥ 2960	≥ 3120	≥ 3300
	160	≥ 3330	≥ 3520	≥ 3650

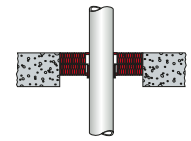
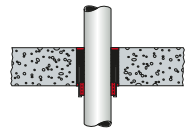
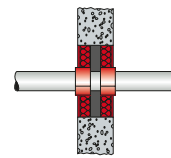
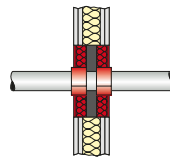
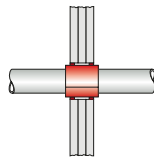


Layers					
	Ø (mm)	AF1 L (mm)	AF2 L (mm)	AF3 L (mm)	AF4 L (mm)
2	32	≥ 400	≥ 420	≥ 460	≥ 500
	40	≥ 420	≥ 470	≥ 530	≥ 580
	50	≥ 490	≥ 540	≥ 590	≥ 640
	56	≥ 520	≥ 590	≥ 620	≥ 690
4	63	≥ 1180	≥ 1290	≥ 1370	≥ 1500
	75	≥ 1390	≥ 1500	≥ 1600	≥ 1720
5	90	≥ 1940	≥ 2110	≥ 2210	≥ 2360
	110	≥ 2290	≥ 2570	≥ 2570	≥ 2730



					
≤ 75 mm	2	2	-	-	-
> 75 mm	3	3	-	-	-

GENERAL INFORMATION



Partition	Shaft Wall	Flexible Wall	Rigid Wall	Rigid Floor
Base Material Thickness (t_E)	3 × 15 mm	≥ 100 mm	≥ 100 mm	≥ 150 mm
Annular Gap	0–15 mm		0–15 mm	
Gap Filler	CFS-S ACR	CFS-S ACR or gypsum plaster		CFS-S ACR or mortar
Penetrant	Standard and non-standard Aluminium composite pipes, plastic conduits		Plastic pipes (PE, PP, PVC, ABS)	

MAIN APPROVED APPLICATIONS



Application	Pipe material	Pipe Ø mm	Shaft wall	Flexible wall	Rigid wall	Rigid floor
Waste Water & Roof Drainage 	PE, PE-HD (EN1519-1, EN12666-1, EN12201-2)		-		EI 90 U/U (EI 90U/C)	
	ABS (EN1455-1)		-		EI 90 U/U (EI 90 U/C)	
	SAN+PVC (EN1565-1)		-		EI 90 U/U (EI 90 U/C)	
	PVC-U (EN1329-1, EN 1453-1, EN1452-1, EN1566-1, EN ISO 15493, EN 1452)	32 to 110 (32 to 160)	-		EI 90 U/U (EI 90 U/C)	
	PE (EN ISO 15494, DIN 8074)		-		EI 90 U/U (EI 90 U/C)	
	PE-S2 Geberit® dB20		-		EI 90 U/U (EI 90 U/C)	
	PP Non-regulated		-		EI 90 U/U (EI 90 U/C)	
	PE, PE-HD (EN1519-1, EN12666-1, EN12201-2) with Elastomeric insulation		-		EI 90 U/U	
	ABS (EN1455-1) with Elastomeric insulation	32 to 110	-		EI 90 U/U	
	SAN+PVC (EN1565-1) with Elastomeric insulation		-		EI 90 U/U	
Heating & Cooling, Fresh water 	Al Composite*	14-32	EI 90 U/C	-	-	-

* Al Composite: Geberit® Mepla, Uponor Uni Pipes Plus®, Ke Kelit® Kelox Multilayer pipe®, Rehau® Rautitan Stabi®, TECEFlex®, Rehau® Rautitan Flex®, Roth Alu-Laserplus®, Viega Sanfix Fosta®

Excerpt of ETA documents. Check the exact field of application for each pipe (type, diameter, pipe wall thickness) in the ETA-20/0989 and ETA 11/0429 documents

MAIN APPROVED APPLICATIONS

Application	Pipe material	Pipe Ø mm	Coated board in flexible/rigid wall	Coated board in rigid floor
Waste water 	PE/PE-HD (EN 1519-1, EN12555-1, EN12201-2), Geberit® Silent dB20	32 to 110 (32 to 160)		EI 90 U/U (EI 90 U/C)
	PVC (EN1452-1, EN1329-1, EN1453-1, EN1566-1, EN ISO1452-2, EN ISO 15493, DIN8061/8062)			
	PP non-regulated*			
Industry 	PE (EN15494, DIN8074/8075)			EI 90 U/C
	PVC (EN1452-1, EN1329-1, EN1453-1, EN1566-1, EN ISO1452-2, EN ISO 15493, DIN8061/8062)			
Roof drainage 	PE/PE-HD (EN 1519-1, EN12555-1, EN12201-2) with Elastomeric insulation	32 to 110		EI 90 U/U
Potable water & Cooling 	Composite pipes** with elastomeric insulation	16 to 75		EI 90 U/C
	Copper pipe with combustible insulation	10 to 42		EI 90 C/U
	Steel pipe with combustible insulation	10 to 219		

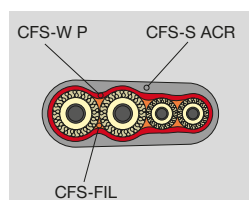
* PP non-regulated: Coes® BLUEPOWER, Coes® PhoNo Fire, Geberit® Silent PP, Ke Kelit® PhonEx®AS, Marley® Silent, Ostendorf® Skolan®, Pipelife® Master3, Poloplast® Polo-KAL 3S®, Poloplast® NG®, Poloplast® Polo-KAL XS®, Rehau® Raupiano® Plus, Valsir® Silere®, Valsir® Triplus®, Wavin® AS®, Wavin SiTech®

** Composite pipes: Rehau® Rautitan stabil, Geberit® Mepla, Ke Kelit® Kelox, Uponor MLC

Excerpt of ETA documents. Check the exact field of application for each pipe (type, diameter, pipe wall thickness) in the ETA-20/0989 and ETA 11/0429 document

OTHER APPROVED APPLICATIONS

Multiple penetration of Al. composite pipes



EI90 U/C

See ETA-20/0989 for details of approved pipes



CHARACTERISTICS OF CFS-W P

Characteristics	Assessment of characteristics	Norm, standard, test
Health and the environment Dangerous substances	<p>Hilti Firestop wrap CFS-W P" was tested for SVOC and VOC according to EAD 350454-00-1104, clause 2.2.5.1, in accordance with EN 16516 with a loading factor of 0.007m²/m³. Release scenario IA1 and IA2 have been tested. The concentration of SVOC after 3 days and after 28 days was <0.005mg/m³. The concentration of the total emission of VOC after 3 days and after 28 days was, as well, <0.005mg/m³.</p>	<p>Material safety data sheet</p>
Durability and serviceability	<p>Category Y2 (Product intended for use at temperature below 0 °C, but with no exposure to rain or UV</p>	<p>EAD 350454-00-1104</p>
Reaction to fire	<p>Class E</p>	<p>EN 13501-1</p>



Hilti Corporation
9494 Schaan, Liechtenstein
P +423-234 2965

www.facebook.com/hiltigroup
www.hilti.group