

Table of contents

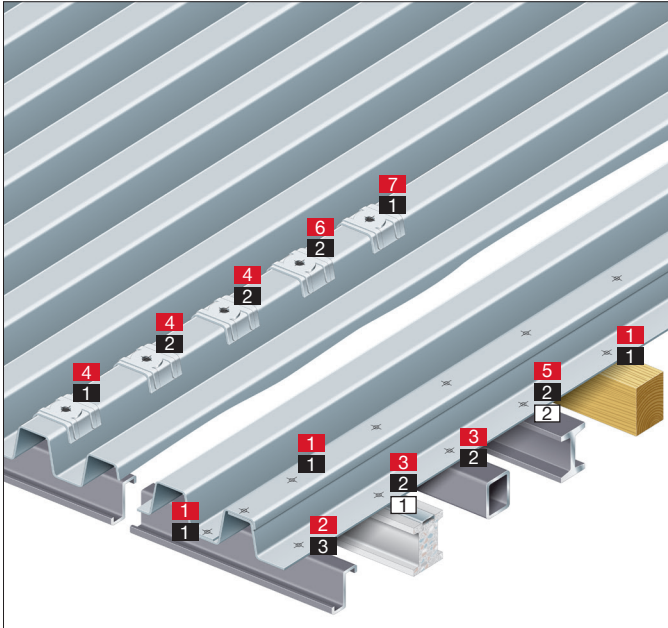
1.1	Uninsulated roof with steel or aluminium sheet	2	6.2		
1.2	Insulated roof with steel or aluminium sheet	2	6.2.1	Stainless steel overlapping screw, S-MS 41 S/51 S	57
1.3	Insulated flatroof	3	6.2.2	Stainless steel self-drilling screw (Ø 16) S-MD 51 S	58
1.4	Sandwich roof	3	6.2.3	Stainless steel self-drilling screw (Ø 19) S-MD 61 S	59
1.5	Eaves	4	6.2.4	Stainless steel self-drilling screw (Ø 16, 19, 22) S-MD LS	60
1.6	Finishing at corners and edges	4	6.2.5	Stainless steel self-drilling screw (Ø 14) S-MD 43 S	61
1.7	Uninsulated siding with steel or aluminium sheet	5	6.2.6	Stainless steel self-drilling screw (Ø 16) S-MD 53 S	62
1.8	Sandwich panel siding	5	6.2.7	Stainless steel self-drilling screw (Ø 19) S-MD 63 S	63
1.9	Insulated siding with steel or aluminium sheet, vertical	6	6.2.8	Stainless steel self-drilling screw (Ø 22) S-MD 73 S	64
1.10	Insulated siding with steel or aluminium sheet, horizontal	6	6.2.9	Stainless steel self-drilling screw (Ø 16) S-MD 55 S	65
1.11	Light ventilated facade, 1 Layer	7	6.2.10	Stainless steel self-drilling screw (Ø 19) S-MD 65 S	66
1.12	Light ventilated facade, 2 Layer	7	6.2.11	Stainless steel self-drilling screw (Ø 22) S-MD 75 S	67
2.1	Leak-proof connections without swarf on the roof and wall	8	6.3		
2.2	Make reliable, high-speed screw fastenings without tip failure, even in high-strength steel	10	6.3.1	Stainless steel self-drilling pan head screw S-MD 01 PS	68
2.3	Screwdriving at high speed	11	6.3.2	Stainless steel self-drilling pan head screw S-MD 03 PS	69
2.4	Mobile power for decking and siding	12	6.3.3	Stainless steel self-drilling pan head screw S-MD 05 PS	70
3.1	Selection of the right screw	15-16	6.4		
3.2	Screw type	17	6.4.1	Stainless self-drill pan head screw (Ø 12) S-MD 31 PS	71
3.3	Screw head & recess	17	6.4.2	Stainless self-drill pan head screw (Ø 12) S-MD 33 PS	72
3.4			6.4.3	Stainless self-drill pan head screw (Ø 12) S-MD 35 PS	73
3.4.1	Definition of the screw length (L)	18	6.5		
3.4.2	Definition of the drilling performance (DC)	18		Stainless steel self-drilling screw S-AD 01 S/SS	74
3.4.3	Calculating the fastening height (MF)	18	7.1		
3.5	Services offered	19		Carbon steel sandwich panel screw (Ø 19) S-CDW 61 C	77
3.6	Hilti Screw Nomenclature	19	7.2		
4.1	Corrosion protection	23		Carbon steel sandwich panel screw (Ø 16) S-CD 53 C	78
4.2	Test procedures and evaluation of corrosion protection systems	24	7.3		
4.3	Selecting the right corrosion protection for anchors, powder-actuated fasteners and screws	25		Carbon steel sandwich panel screw (Ø 19) S-CD 63 C	79
4.4	Environment categories	26	7.4		
4.5	Material and Corrosion resistance data for steel/metal screws	27		Carbon steel sandwich panel screw (Ø 16) S-CD 55 C	80
6.1			7.5		
6.1.1	Stainless steel overlapping Screw, chipless S-MS 01 S	53		Carbon steel sandwich panel screw (Ø 19) S-CD 65 C	81
6.1.2	Stainless steel self-drilling screw S-MD 01 S	54	8.1		
6.1.3	Stainless steel self-drilling screw S-MD 03 S	55		Stainless steel sandwich panel screw (Ø 16) S-CDW 51 S	83
6.1.4	Stainless steel self-drilling screw S-MD 05 S	56	8.2		
				Stainless steel sandwich panel screw (Ø 19) S-CDW 61 S	84
			8.3		
				Stainless steel sandwich panel screw (Ø 22) S-CDW 71 S	85
			8.4		
				Stainless steel sandwich panel screw (Ø 16) S-CD 53 S	86
			8.5		
				Stainless steel sandwich panel screw (Ø 19) S-CD 63 S	87
			8.6		
				Stainless steel sandwich panel screw (Ø 22) S-CD 73 S	88
			8.7		
				Stainless steel sandwich panel screw (Ø 16) S-CD 55 S	89
			8.8		
				Stainless steel sandwich panel screw (Ø 19) S-CD 65 S	90
			8.9		
				Stainless steel sandwich panel screw (Ø 22) S-CD 75 S	91
			9.1		
				Galvanized self-tapping screws (Ø 16 mm) S-MP 53 Z	93
			9.2		
				Galvanized self-tapping screws (Ø 16 mm) S-MP 52 Z	94
			10.1		
				Stainless steel self-tapping screws (Ø 16 mm) S-MP 53 S	97
			10.2		
				Stainless steel self-tapping screws (Ø 19 mm) S-MP 63 S	98
			10.3		
				Stainless steel self-tapping screws (Ø 22 mm) S-MP 73 S	99
			10.4		
				Stainless steel self-tapping screws (Ø 16 mm) S-MP 52 S	100
			10.5		
				Stainless steel self-tapping screws (Ø 19 mm) S-MP 62 S	101

10.6	Stainless steel self-tapping screws (Ø22 mm) S-MP 72 S	102	15.3	Accessories	138
10.7	Stainless steel self-tapping screws (Ø 16 mm) S-MP 54 S	103	15.4	Nut setter S-NS (C)	138
10.8	Stainless steel self-tapping screws (Ø 19 mm) S-MP 64 S	104	15.5	Magnetic nut setter S-NS (M)	139
10.9	Stainless steel self-tapping screws (Ø22 mm) S-MP 74 S The universal self-tapping screw for thin materials and wood	105	15.6	System nut setter S-SY	139
11.1	Galvanized carbon steel self-drilling wing tip screw S-WD 11 Z M 107		15.7	Bit and bit holder	139
11.2	Galvanized steel self-drilling wing tip screw S-WD 11 Z	108	15.8	Bit and bit holder	140
11.3	Coated steel self-drilling wing tip screw S-WD 11C	109	15.9	Special cartridge für DX 76	140
11.4	Coated steel self-drilling wing tip screw S-WD 13 C	110	15.10	Special cartridges for the DX 860	140
11.5	Coated steel self-drilling wing tip screw S-WD 15 C	111	16.1	ETA-10/0182 – Fastening screws for metal members and sheeting	144
12.1	Carbon steel flat roof screw S-IT 01 C 4.8	113	16.2 Overview approval		
12.2	Carbon steel flat roof screw S-IT 01 C 6.3	114	16.2.1	ETA-10/0182 – Fastening screws for metal members and sheeting	144
12.3	Load distribution plates S-IW	115	16.2.2	ETA-13/0179 – Fastening screws for sandwich panels	145
12.4	Flat roof fastener (Ø 40 mm) S-IDP 4.8C/40	116	16.2.3	ETA-12/0057 – Fasteness for systems of mech. fastened flexible roof waterproofing membranes	145
12.5	Flat roof fastener (80 mm x 40 mm) S-IDP 4.8C/8040	117	16.2.4	Z-14.1-4 – German approval for fastening screws for steel members and sheeting	146
12.6	Flat roof fastener (Ø 40 mm) S-IDP 6.7C/40	118	16.2.5	Z-14.1-537 – German approval for fastening screws for steel members and sheeting	146
12.7	Flat roof fastener (80 mm x 40 mm) S-IDP 6.7C/8040	119	16.2.6	Certification report P-BWU02-148009 – Fastening screws for external ventilated facade cladding according to DIN 18516-1	146
12.8	Flat roof fastener (Ø 40 mm) S-IDP 4.8S/40	120	16.3	ETA-10/0182 – Fastening screws for metal members and sheeting	147-184
12.9	Flat roof fastener (80 mm x 40 mm) S-IDP 4.8S/8040	121	16.4	ETA-13/0179 – Fastening screws for sandwich panels	185-194
13.1	Saddle washer for trapezoidal profile S-SWTR	123	16.5	ETA-12/0057 – Fasteness for systems of mechanically fastened flexible roof waterproofing membranes	195-206
13.2	Saddle washer for trapezoidal profile S-SWTR RAL	124	16.6	Z-14.1-4 – German approval for fastening screws for steel members and sheeting	207-212
13.3	Saddle washer for wave profile S-SWWA	125	16.7	Z-14.1-537 – German approval for fastening screws for steel members and sheeting	213-225
13.4	Which saddle washer is suitable for which profile?	126	16.8	Certification report P-BWU02-148009 – Fastening screws for external ventilated facade cladding according to DIN 18516-1	226-232
13.5			16.9 Technical data for screws without approval		
13.5.1	S-AW Sealing washer application example	129	S-MD 25Z 5.5xL carbon steel self-drilling screw	233	
13.5.2	Product Data	129	S-MD 21Z 5.5xL carbon steel self-drilling screw	233	
13.5.3	Dimensions	130	S-MD 51LZ 4.8xL carbon steel self-drilling screw	234	
13.5.4	Sealing washers for screws with „PS“ (S-MD)	130	S-MD 01ZW 5.5xL carbon steel self-drilling screw	234	
13.5.5	Sealing washer for screws without „PS“ (S-MD, S-MP)	130	S-MD 05ZW 5.5xL carbon steel self-drilling screw	235	
13.5.6	Sealing washer for screws S-MS	131	S-MD 03ZW 5.5xL carbon steel self-drilling screw	235	
13.5.7	Sealing washer for screws panel (S-CD/S-CDW)	131	S-MD 01S 4.8xL stainless steel self-drilling screw	236	
14.1			S-MD 01LS 5.5xL stainless steel self-drilling screw	236	
	Siding and decking nail X-ENP X-ENP Nail	133	S-MD 03S 6.3xL stainless steel self-drilling screw	237	
	X-ENP Nail, collated for DX 76 MX/DX 76 PTR	133	S-MD 03S 5.5xL stainless steel self-drilling screw	237	
	X-ENP Nail, collated for DX 860-ENP	133	S-MD 05SxL stainless steel self-drilling screw	238	
14.2			S-CDW 61C 6.5xL carbon steel self-drilling screw	238	
	Sealing cap for ENP SDK2/PDK2	134	S-CD 65C 5.5xL carbon steel self-drilling screw	239	
14.3			S-CD 63C 5.5xL carbon steel self-drilling screw	239	
	Setting tool for sealing caps SDK2/PDK2	134	S-CD63S 5.5xL/S-CD73S 5.5xL stainless steel self-drilling screw	240	
14.4			S-CD65S 5.5xL/S-CD75S 5.5xL stainless steel self-drilling screw	240	
	Sheet metal nail X-ENP2K	135	S-CDW61S 6.5xL/S-CDW71S 6.5xL stainless steel self-drilling screw	241	
	X-ENP2K Nail	135	S-MP 53Z 6.5xL carbon steel self-tapping screw	242	
	X-ENP2K Nagel, magaziniert	135	S-MP 52Z 6.3xL carbon steel self-tapping screw	242	
15.1			S-WD 13C 4.8xL; 5.5xL carbon steel self-drilling wing screw	243	
	Battery metal construction screwdriver (Li-Ion) ST 1800-A22	137	S-WD 11C 3.8xL; 4.2xL carbon steel self-drilling wing screw	243	
15.2			S-WD 13C 6.3xL carbon steel self-drilling wing screw	244	
	Metal construction screwdriver ST 1800	137	S-WD 15C 5.5xL carbon steel self-drilling wing screw	244	
			16.10	ETA-04-0101 X-ENP-19L15 vom 01.03.2013	245-252

Content

	Page
1.1	
Uninsulated roof with steel or aluminium sheet	2
1.2	
Insulated roof with steel or aluminium sheet	2
1.3	
Insulated flatroof	3
1.4	
Sandwich roof	3
1.5	
Eaves	4
1.6	
Finishing at corners and edges	4
1.7	
Uninsulated siding with steel or aluminium sheet	5
1.8	
Sandwich panel siding	5
1.9	
Insulated siding with steel or aluminium sheet, vertical	6
1.10	
Insulated siding with steel or aluminium sheet, horizontal	6
1.11	
Light ventilated facade, 1 Layer	7
1.12	
Light ventilated facade, 2 Layer	7

1.1 Uninsulated roof with steel or aluminium sheet



Self-drilling screws

1	S-MS 51Z	S. 39	7	S-CDW 61C	S. 77
	S-MD 51Z	S. 40		S-CDW 51S	S. 83
	S-MS 51S	S. 57		S-CDW 61S	S. 84
	S-MD 51S	S. 58		Saddle washer	S. 123
	S-MD 61S	S. 59		S-CDW 71S	S. 85

2	S-MD 51LZ	S. 41
	S-MD 53Z	S. 42
	S-MD 51LS	S. 60

3	S-MD 53Z	S. 42
	S-MD 53S	S. 62
	S-MD 63S	S. 63
	S-MD 73S	S. 64

4	S-CD 53C	S. 78
	S-CD 63C	S. 79
	S-CD 53S	S. 86
	S-CD 63S	S. 87
	Saddle washer	S. 123
	S-CD 73S	S. 88

5	S-MD 55GZ	S. 43
	S-MD 65GZ	S. 44
	S-MD 55S	S. 65
	S-MD 65S	S. 66
	S-MD 75S	S. 67

6	S-CD 55C	S. 80
	S-CD 65C	S. 81
	S-CD 55S	S. 89
	S-CD 65S	S. 90
	Saddle washer	S. 123
	S-CD 75S	S. 91

Self-tapping screws

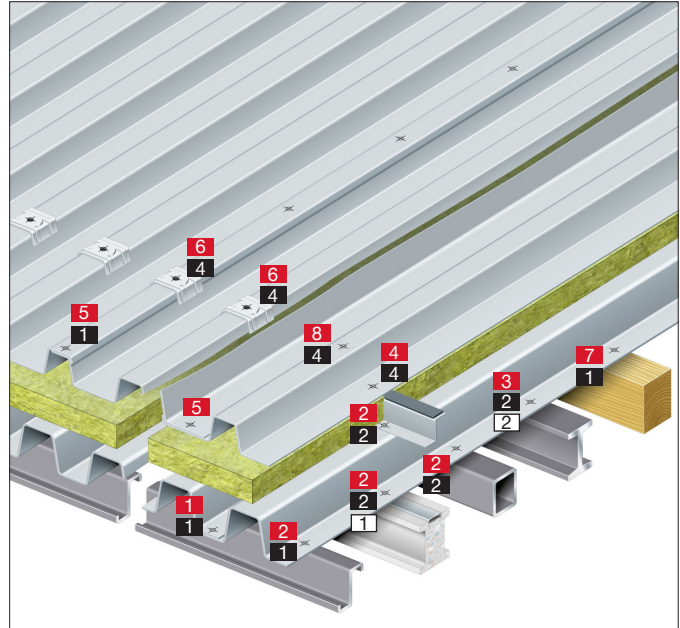
1	S-MP 53Z	S. 93
	S-MP 53S	S. 97
	S-MP 63S	S. 98
	S-MP 73S	S. 99
	Saddle washer	S. 123

2	S-MP 52Z	S. 94
	S-MP 52S	S. 100
	S-MP 62S	S. 101
	S-MP 54S	S. 103
	S-MP 64S	S. 104
	Saddle washer	S. 123
	S-MP 72S	S. 102
	S-MP 74S	S. 105

DX-application

1	X-ENP2K	S. 135
	SDK2/PDK2	S. 134
2	X-ENP	S. 133
	SDK2/PDK2	S. 134

1.2 Insulated roof with steel or aluminium sheet



Self-drilling screws

1	S-MS 01Z	S. 31
	S-MD 01Z	S. 32
	S-MDU 21Z	S. 35
	S-MD/MS M	S. 38

2	S-MD 21Z	S. 35
	S-MD 23Z	S. 36

3	S-MD 25GZ	S. 37
	S-MD 05GZ	S. 34

4	S-MD 51LZ	S. 41
	S-MD 53Z	S. 42
	S-MD 51LS	S. 60
	S-MD 61LS	S. 60
	S-MD 71LS	S. 60

5	S-MS 51Z	S. 39
	S-MD 51Z	S. 40
	S-MS 51S	S. 57
	S-MD 51S	S. 58
	S-MD 61S	S. 59

6	S-CD 53C	S. 78
	S-CD 63C	S. 79
	S-CD 53S	S. 86
	S-CD 63S	S. 87
	Saddle washer	S. 123

7	S-MD 01S	S. 54
	S-MD 51S	S. 58

8	S-CD 73S	S. 88
----------	----------	-------

Self-tapping screws

1	S-MP 53Z	S. 93
	S-MP 53S	S. 97

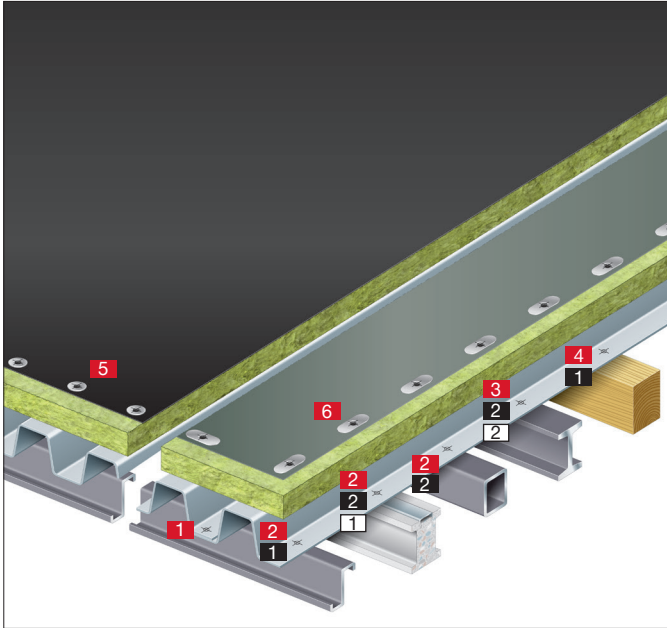
2	S-MP 52Z	S. 94
	S-MP 52S	S. 100
	S-MP 54S	S. 103
	S-MP 53Z	S. 93
	S-MP 52Z	S. 94

4	S-MP 52S	S. 100
	S-MP 62S	S. 101
	S-MP 72S	S. 102
	S-MP 54S	S. 103
	S-MP 64S	S. 104
	S-MP 74S	S. 105
	Saddle washer	S. 123

DX-application

1	X-ENP2K	S. 135
2	X-ENP	S. 133

1.3 Insulated flatroof



Self-drilling screws

1	S-MS 01Z	S. 31
	S-MD 01Z	S. 32
	S-MDU 21Z	S. 35
	S-MD/MS M	S. 38
2	S-MD 21Z	S. 35
	S-MD 23Z	S. 36
3	S-MD 25GZ	S. 37
	S-MD 05GZ	S. 34
4	S-MD 01S	S. 54
	S-MD 51S	S. 58
5	S-IDP 4.8C/40	S. 116
	S-IDP 6.7C/40	S. 118
	S.IDP 4.8S/40	S. 120
6	S-IDP 4.8C/8040	S. 117
	S-IDP 6.7C/8040	S. 119
	S.IDP 4.8S/8040	S. 121

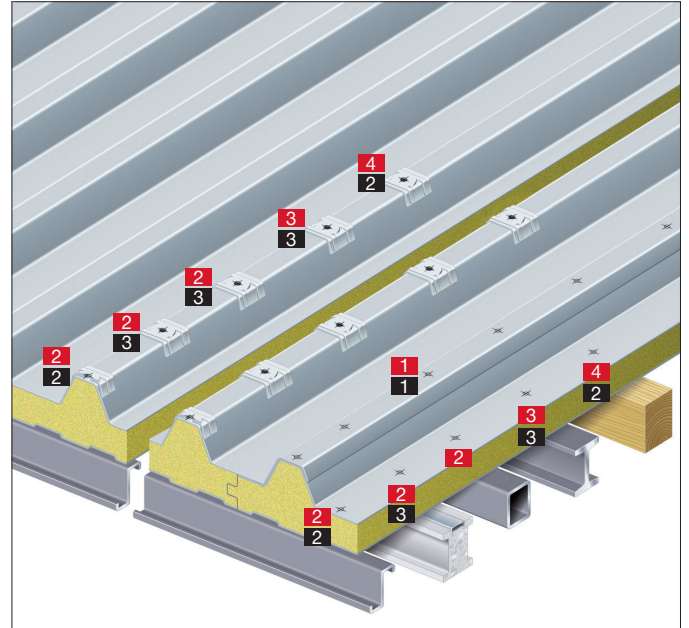
Self-tapping screws

1	S-MP 53Z	S. 93
	S-MP 53S	S. 97
2	S-MP 52Z	S. 94
	S-MP 52S	S. 100
	S-MP 54S	S. 103

DX-application

1	X-ENP2K	S. 135
2	X-ENP	S. 133

1.4 Sandwich panel roof



Self-drilling screws

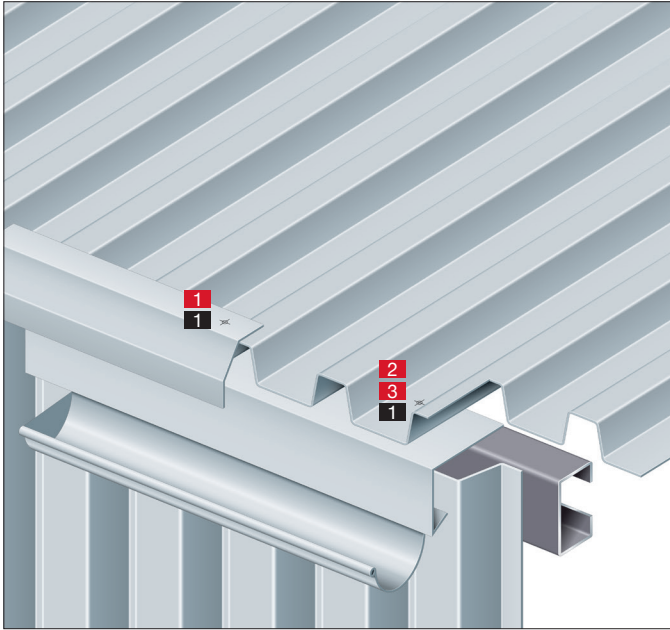
1	S-MS 51Z	S. 39
	S-MD 51Z	S. 40
	S-MS 51S	S. 57
	S-MD 51S	S. 58
	S-MD 61S	S. 59
2	S-CD 53C	S. 78
	S-CD 63C	S. 79
	S-CD 53S	S. 86
	S-CD 63S	S. 87
	Saddle washer	S. 123
	S-CD 73S	S. 88
3	S-CD 55C	S. 80
	S-CD 65C	S. 81
	S-CD 55S	S. 89
	S-CD 65S	S. 90
	Saddle washer	S. 123
	S-CD 75S	S. 91
4	S-CDW 61C	S. 77
	S-CDW 51S	S. 83
	S-CDW 61S	S. 84
	Saddle washer	S. 123
	S-CDW 71S	S. 85

Self-tapping screws

1	S-MP 53Z	S. 93
	S-MP 53S	S. 97
2	S-MP 53Z	S. 93
	S-MP 53S	S. 97
	S-MP 63S	S. 98
	Saddle washer	S. 123
	S-MP 73S	S. 99
3	S-MP 52Z	S. 94
	S-MP 52S	S. 100
	S-MP 62S	S. 101
	S-MP 54S	S. 103
	S-MP 64S	S. 104
	Saddle washer	S. 123
	S-MP 72S	S. 102
	S-MP 74S	S. 105

1

1.5 Eaves



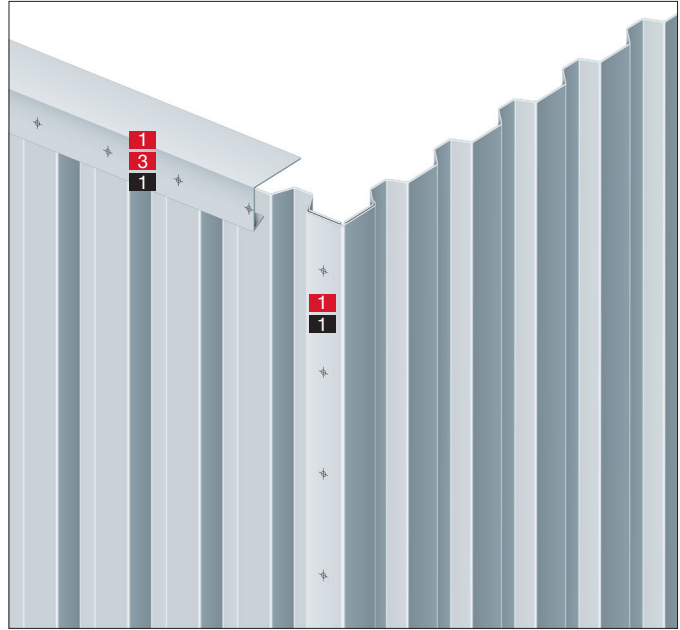
Self-drilling screws

1	S-MS 41Z	S. 39
	S-MS 51Z	S. 39
	S-MD 51Z	S. 40
	S-MS 41S	S. 57
	S-MS 51S	S. 57
	S-MD 51S	S. 58
2	S-MD 51LZ	S. 41
	S-MD 53Z	S. 42
	S-MD 51LS	S. 60
3	S-MD 53Z	S. 42
	S-MD 43S	S. 61
	S-MD 53S	S. 62

Self-tapping screws

1	S-MP 53Z	S. 93
	S-MP 53S	S. 97

1.6 Finishing at corners and edges



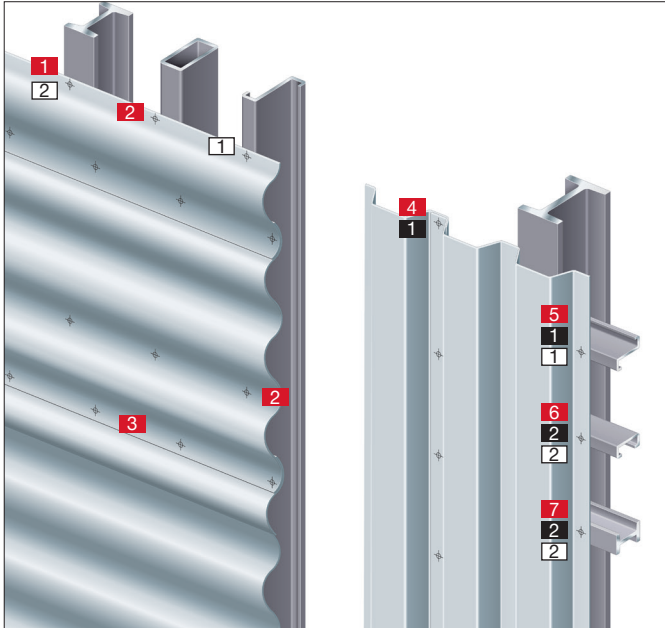
Self-drilling screws

1	S-MS 41Z	S. 39
	S-MS 51Z	S. 39
	S-MD 51Z	S. 40
	S-MS 41S	S. 57
	S-MS 51S	S. 57
	S-MD 51S	S. 58
2	S-MD 51LZ	S. 41
	S-MD 53Z	S. 42
	S-MD 51LS	S. 60
3	S-MD 53Z	S. 42
	S-MD 43S	S. 61
	S-MD 53S	S. 62

Self-tapping screws

1	S-MP 53Z	S. 93
	S-MP 53S	S. 97

1.7 Uninsulated siding with steel or aluminium sheet



Self-drilling screws

1	S-MD 35PS	S. 73
2	S-MD 33PS	S. 72
	S-MD 43S	S. 61
3	S-MD 31PS	S. 71
	S-MS 41Z	S. 39
4	S-MS 41Z	S. 39
	S-MS 51Z	S. 39
	S-MD 51Z	S. 40
	S-MS 41S	S. 57
	S-MS 51S	S. 57
5	S-MD 51LZ	S. 41
	S-MD 53Z	S. 42
	S-MD 51LS	S. 60
6	S-MD 53Z	S. 42
	S-MD 53S	S. 62
	S-MD 63S	S. 63
	S-MD 73S	S. 64
7	S-MD 55GZ	S. 43
	S-MD 65GZ	S. 44
	S-MD 55S	S. 65

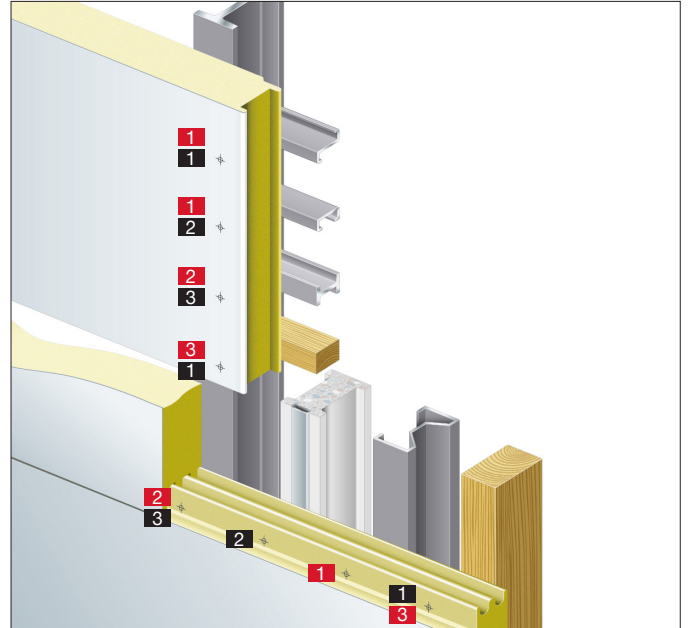
Self-tapping screws

1	S-MP 53Z	S. 93
	S-MP 53S	S. 97
2	S-MP 52Z	S. 94
	S-MP 52S	S. 100
	S-MP 54S	S. 103

DX-application

1	X-ENP2K	S. 135
	SDK2/PDK2	S. 134
2	X-ENP	S. 133
	SDK2/PDK2	S. 134

1.8 Sandwich panel siding



Self-drilling screws

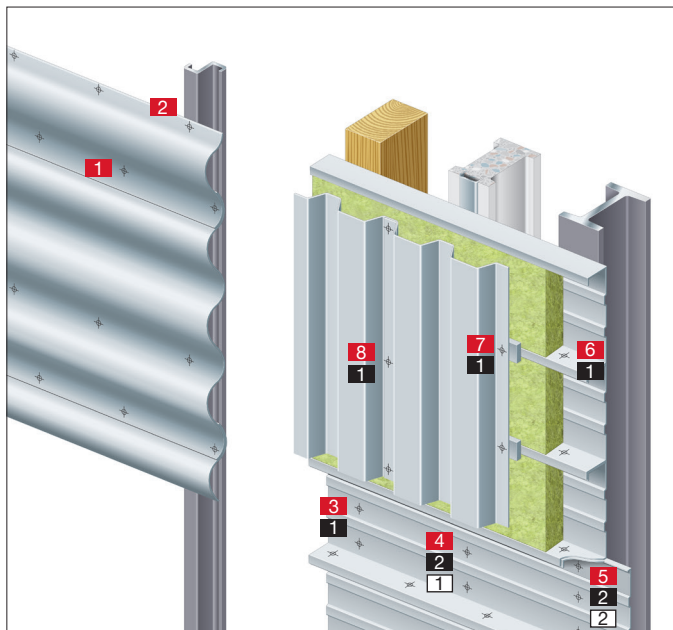
1	S-CD 53C	S. 78
	S-CD 63C	S. 79
	S-CD 53S	S. 86
	S-CD 63S	S. 87
2	S-CD 55C	S. 80
	S-CD 65C	S. 81
	S-CD 55S	S. 89
	S-CD 65S	S. 90
3	S-CDW 61C	S. 77
	S-CDW 51S	S. 83
	S-CDW 61S	S. 84

Self-tapping screws

1	S-MP 53Z	S. 93
	S-MP 53S	S. 97
	S-MP 63S	S. 98
2	S-MP 52Z	S. 94
	S-MP 52S	S. 100
	S-MP 62S	S. 101
3	S-MP 52Z	S. 94
	S-MP 54S	S. 103
	S-MP 64S	S. 104

1

1.9 Insulated siding with steel or aluminium sheet, vertical



Self-drilling screws

1	S-MS 41Z	S. 39
	S-MD 31PS	S. 71
2	S-MD 31PS	S. 71
	S-MD 33PS	S. 72
	S-MD 43S	S. 61
3	S-MD 01PS	S. 68
	S-MD 31PS	S. 71
	S-MD 01S	S. 54
	S-MD 51S	S. 58
4	S-MD 21Z	S. 35
	S-MD 23Z	S. 36
5	S-MD 25GZ	S. 37
	S-MD 05GZ	S. 34
6	S-MS 01Z	S. 31
	S-MD 01Z	S. 32
	S-MDU 21Z	S. 35
7	S-MD 51LZ	S. 41
	S-MD 53Z	S. 42
	S-MD 51LS	S. 60
	S-MD 53S	S. 62

8	S-MS 41Z	S. 39
	S-MS 51Z	S. 39
	S-MD 51Z	S. 40
	S-MS 41S	S. 57
	S-MS 51S	S. 57
	S-MD 51S	S. 58
	S-MD 51LS	S. 60

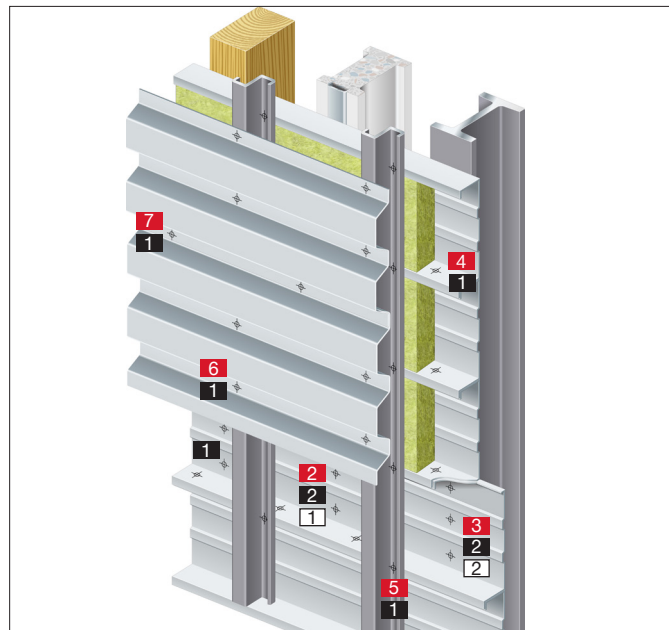
Self-tapping screws

1	S-MP 53Z	S. 93
	S-MP 53S	S. 97
2	S-MP 52Z	S. 94
	S-MP 52S	S. 100
	S-MP 54S	S. 103

DX-application

1	X-ENP2K	S. 135
2	X-ENP	S. 135

1.10 Insulated siding with steel or aluminium sheet, horizontal



Self-drilling screws

1	S-MD 01PS	S. 68
	S-MD 31PS	S. 71
	S-MD 01S	S. 54
	S-MD 51S	S. 58
2	S-MD 21Z	S. 35
	S-MD 23Z	S. 36
3	S-MD 25GZ	S. 37
	S-MD 05GZ	S. 34
4	S-MS 01Z	S. 31
	S-MD 01Z	S. 32
	S-MDU 21Z	S. 35
5	S-MD 01Z	S. 32
	S-MD 03Z	S. 33
	S-MD 51Z	S. 40
	S-MD 51LZ	S. 41
	S-MD 53Z	S. 42
6	S-MD 51LZ	S. 41
	S-MD 53Z	S. 42
	S-MD 51LS	S. 60
	S-MD 53S	S. 62
7	S-MS 41Z	S. 39
	S-MS 51Z	S. 39
	S-MD 51Z	S. 40
	S-MS 41S	S. 57
	S-MS 51S	S. 57
	S-MD 51S	S. 58
	S-MD 51LS	S. 60

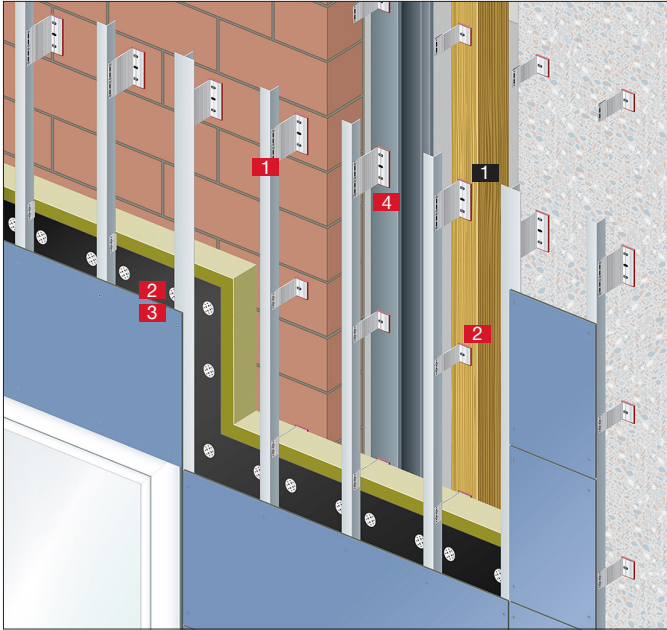
Self-tapping screws

1	S-MP 53Z	S. 93
	S-MP 53S	S. 97
2	S-MP 52Z	S. 94
	S-MP 52S	S. 100
	S-MP 54S	S. 103

DX-application

1	X-ENP2K	S. 135
2	X-ENP	S. 133

1.11 Light ventilated facade 1 Layer



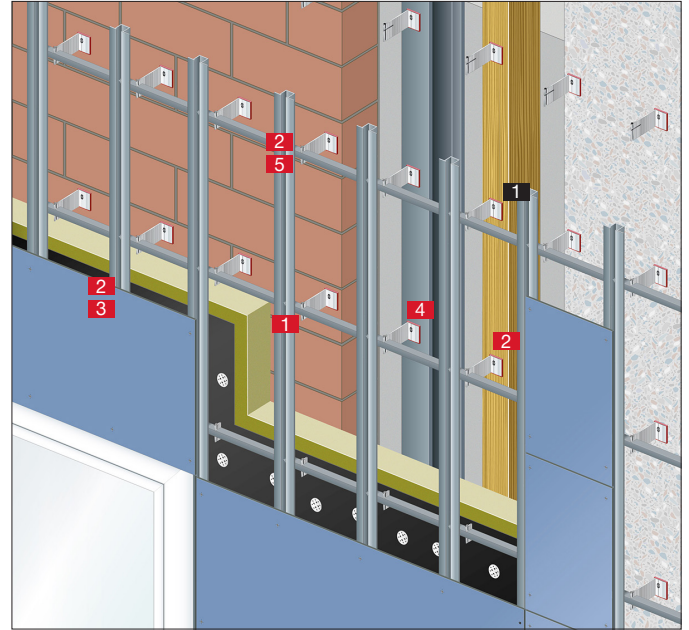
Self-drilling screws

1	S-AD 01S	S. 74
	S-AD 01SS	S. 74
2	S-MD 31PS	S. 71
3	S-MD 33PS	S. 72
4	S-MD 55S	S. 65

Self-tapping screws

1	S-MP 53S	S. 97
----------	----------	-------

1.12 Light ventilated facade 2 Layer



Self-drilling screws

1	S-AD 01S	S. 74
	S-AD 01SS	S. 74
2	S-MD 31PS	S. 71
3	S-MD 33PS	S. 72
4	S-MD 55S	S. 65
5	S-MD 51LS	S. 60

Self-tapping screws

1	S-MP 53S	S. 97
----------	----------	-------