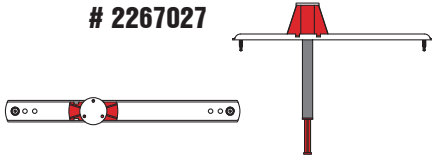




# KCM-MD Long Plate 3/8" + 1/2" + 5/8"

2285445-05.2020

## 15 Kwik Cast KCM-MD LONG PLATE 3/8" + 1/2" + 5/8" RED-R # 2267027



Info | Shop

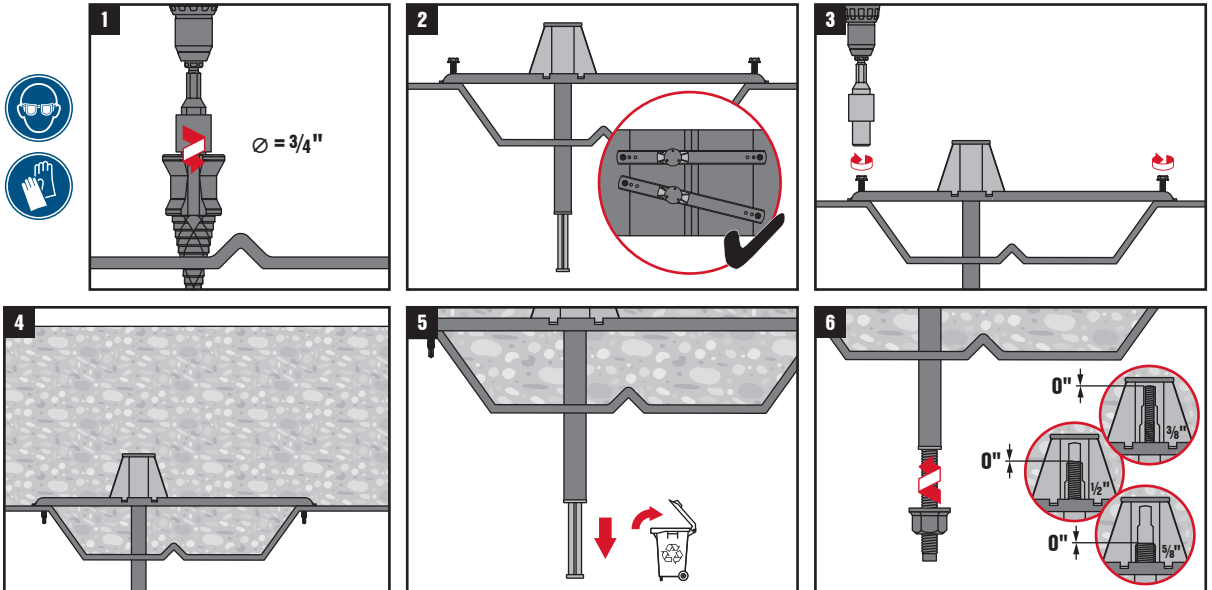


qr.hilti.com/2267027



Made in Taiwan  
Hilti = trademark of  
Hilti Corp., Schaan, LI

LOT NUMBER:



Per FM approval, the metal plate of the insert must be on the top of the deck flutes. For seismic bracing applications cut tube flush to bottom of metal deck.